

---

# RAMP P2P

## HIGH-QUALITY VIDEO DISTRIBUTION FOR NETWORK LOCATIONS WITH LIMITED INFRASTRUCTURE

*Ramp P2P is a WebRTC-based peer-to-peer networking eCDN that optimizes bandwidth by redistributing video among connected viewing devices.*

### Decentralizing Enterprise Video Distribution with P2P Networking

The most impactful and cost-effective way to reach large enterprise audiences is through streaming video. But video consumes significant bandwidth and successfully reaching viewers in every corner of your network can be a challenge.

A peer-to-peer (P2P) networking eCDN helps reduce the bandwidth needed to deliver live video on your

network. The P2P eCDN creates a distributed network of end-user client devices that are all streaming the

same video. The video content is pulled onto the network a limited number of times, then shared between these end-user devices (peers). As a result, viewers get a high-quality video stream while the network experiences significantly less congestion.

---

#### When to Use P2P:

**Live Events.**

Reliable live video streaming to distributed remote offices.

**No Infrastructure.**

Ideal for locations without available server or compute resources.

**Wired Devices.**

Any device that directly connects to the network without WiFi.

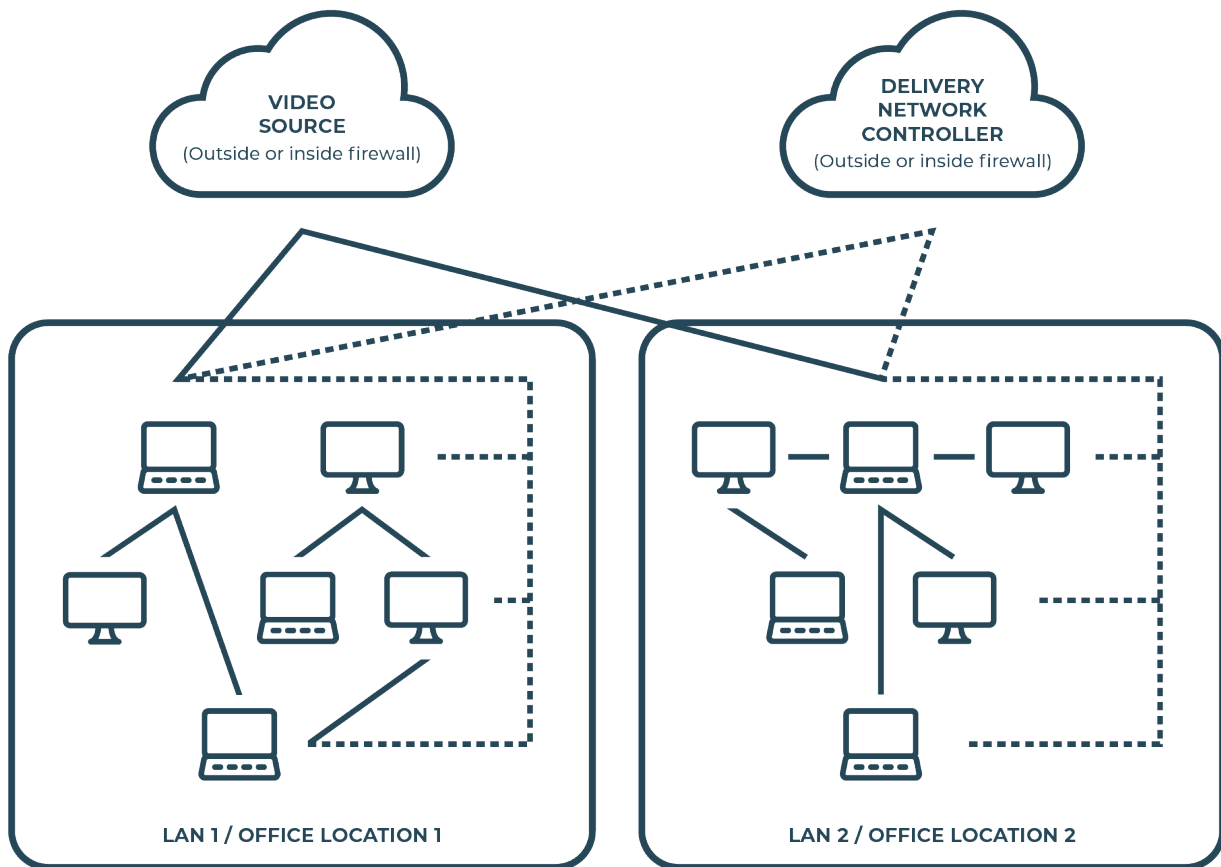
**Quick Deployment.**

No software installation, network configuration or firewall changes.

## High-Quality Video for Locations with Limited Infrastructure

Not all networks are created equal. Some are built on multicast while others were created using different types of infrastructure. One of the strengths of P2P networking is that it needs no infrastructure other than a centralized controller for orchestrating the peer network. Furthermore, Ramp P2P is a WebRTC

browser-based solution that requires no client software or plugin installations on the viewing devices. These features make Ramp P2P an ideal solution to deliver video to remote locations with a limited number of viewers or when there is little to no infrastructure available.



---

## How Ramp P2P Works

Ramp P2P uses WebRTC to establish a network of end-user devices. WebRTC is a widely adopted communication standard already integrated into all modern browsers, devices and operating systems. Therefore, Ramp P2P can be used without a plugin or other client software installed on the end-user device.

A P2P network controller (server application) forms peer groups of end-user devices as they come online. The groups are based on geographic proximity, making the peers suitable to share content quickly and easily. The controller can be hosted as a cloud-based service or on-premises, depending on your organization's preference and security requirements.

When a user requests content, the P2P controller checks the peer group to determine if the content has been previously stored. If a peer is found, the content will be provided without connecting to the original video source.

The result is less bandwidth consumed at the critical network bottlenecks and a higher-quality, stable viewing experience.

Event statistics and video analytics let you monitor your network and webcast performance in real-time for a holistic, data-driven view of your live events.

## Ramp P2P Benefits

- No client software or plugins
- Hosted in the cloud or on-premises
- Supports any device with a browser
- Scales automatically with demand
- Simple, one-time setup
- Encrypted, GDPR and DRM compliant
- Event statistics and video analytics
- Supports virtually any streaming video source
- Simultaneous support for multiple streaming platforms

---

## Ramp — The Universal eCDN

*Ramp is the first and only eCDN provider to offer all three eCDN technologies—multicast, video cache and P2P—to create a complete video distribution solution to meet the specific needs of your enterprise. Use any combination of eCDNs to securely and efficiently distribute video to every location and viewer on the corporate network.*